

Concorso internazionale di progettazione

Abitare Villa Mater.

2.4 Allegato C - Tavole grafiche



con il patrocinio



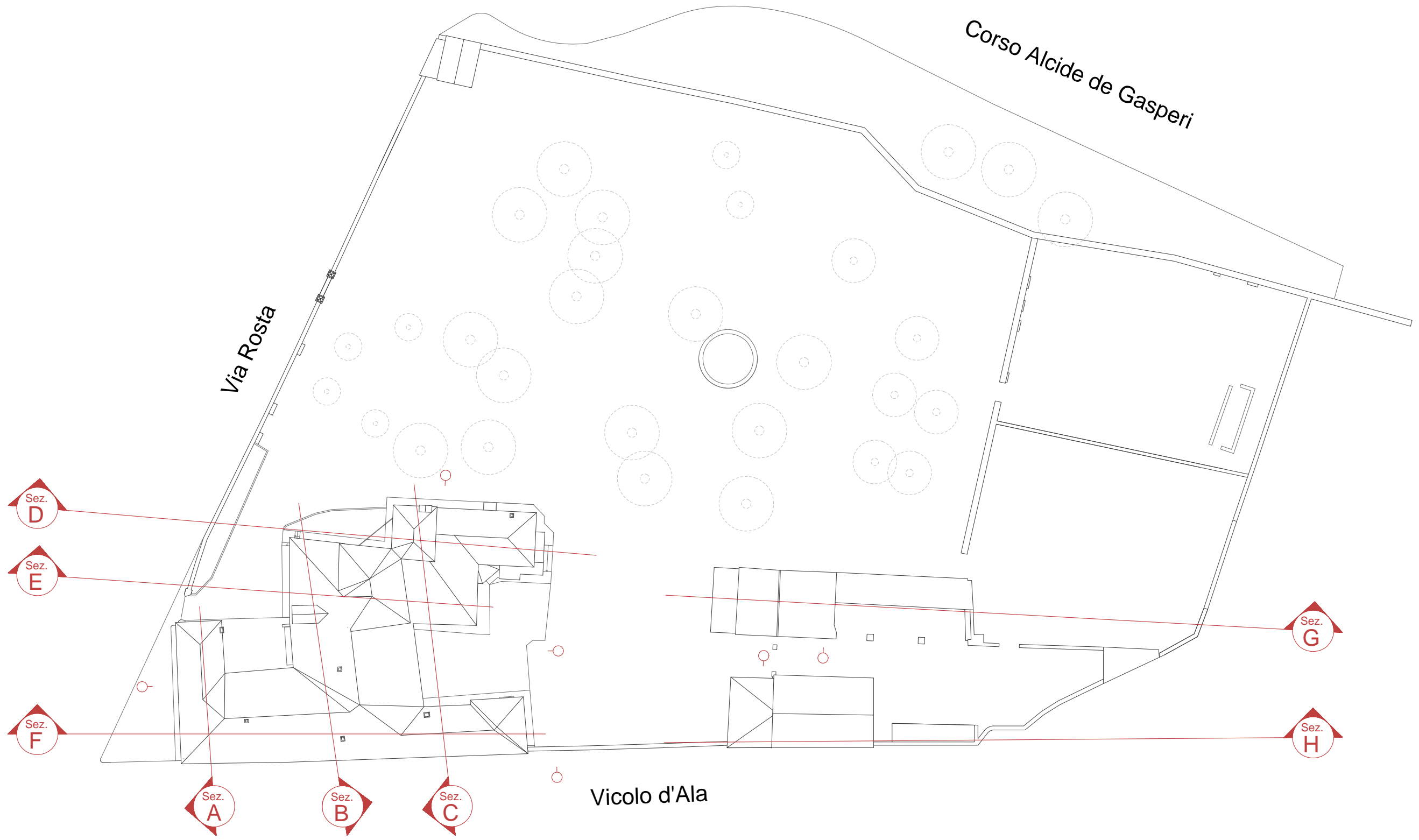
Fondazione
Ufficio Pio



Fondazione
Compagnia
di San Paolo

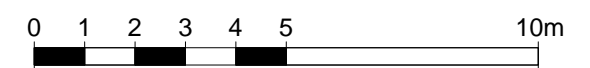
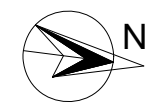


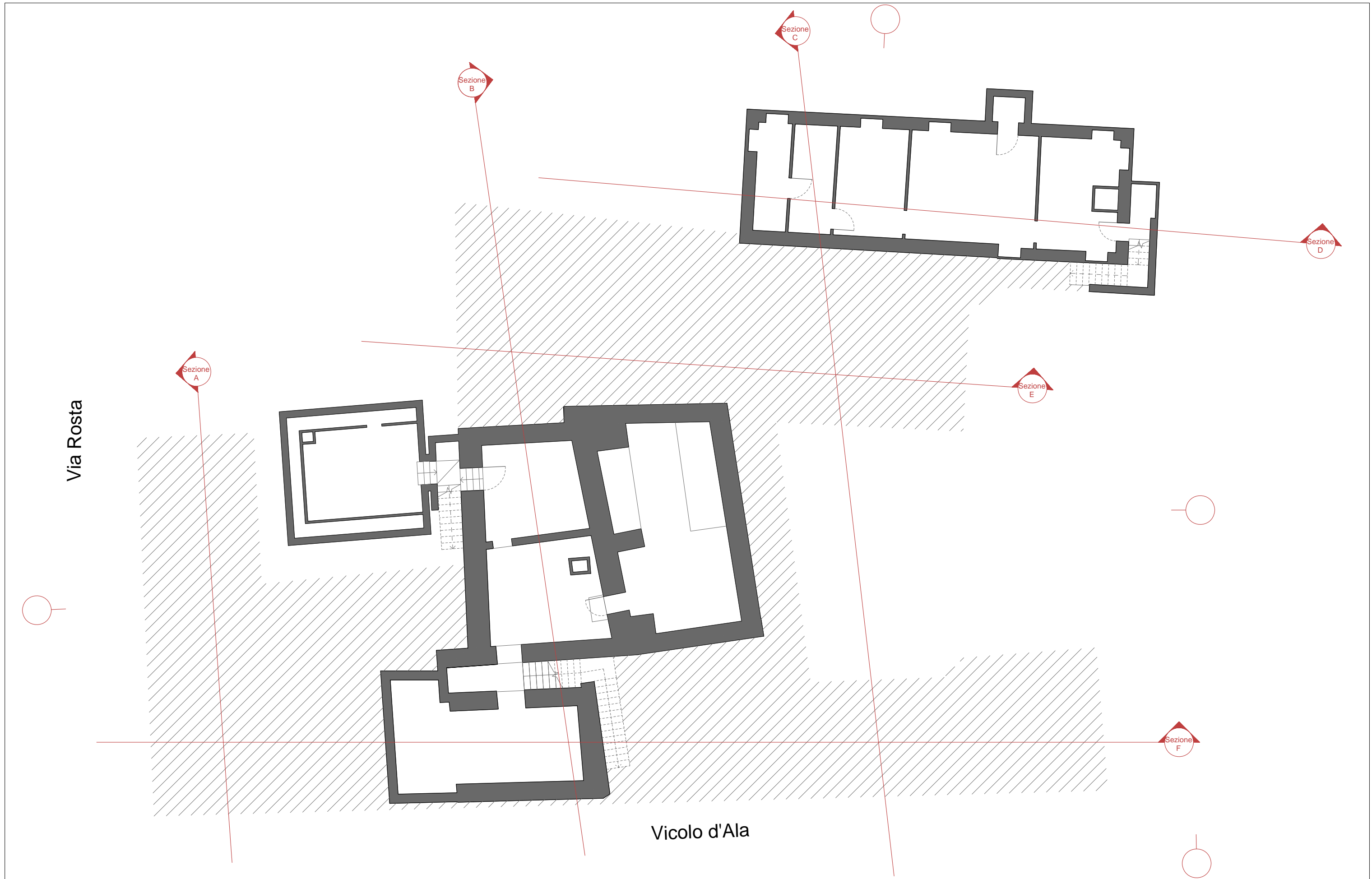
CITTÀ DI RIVOLI
PROVINCIA DI TORINO



VILLA MATER

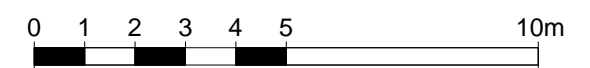
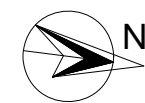
Planimetria Generale
Scala 1:500





VILLA MATER

Edificio A. VILLA - Pianta piano interrato
Scala 1:150



TAV.
2

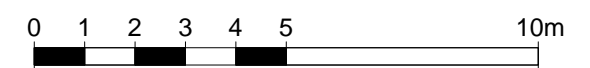
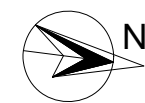
Via Rosta



Vicolo d'Ala

VILLA MATER

Edificio A. VILLA - Pianta piano terreno
Scala 1:150



TAV.
3

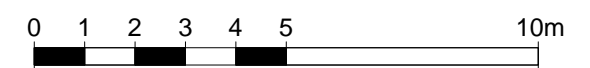
Via Rosta



Vicolo d'Ala

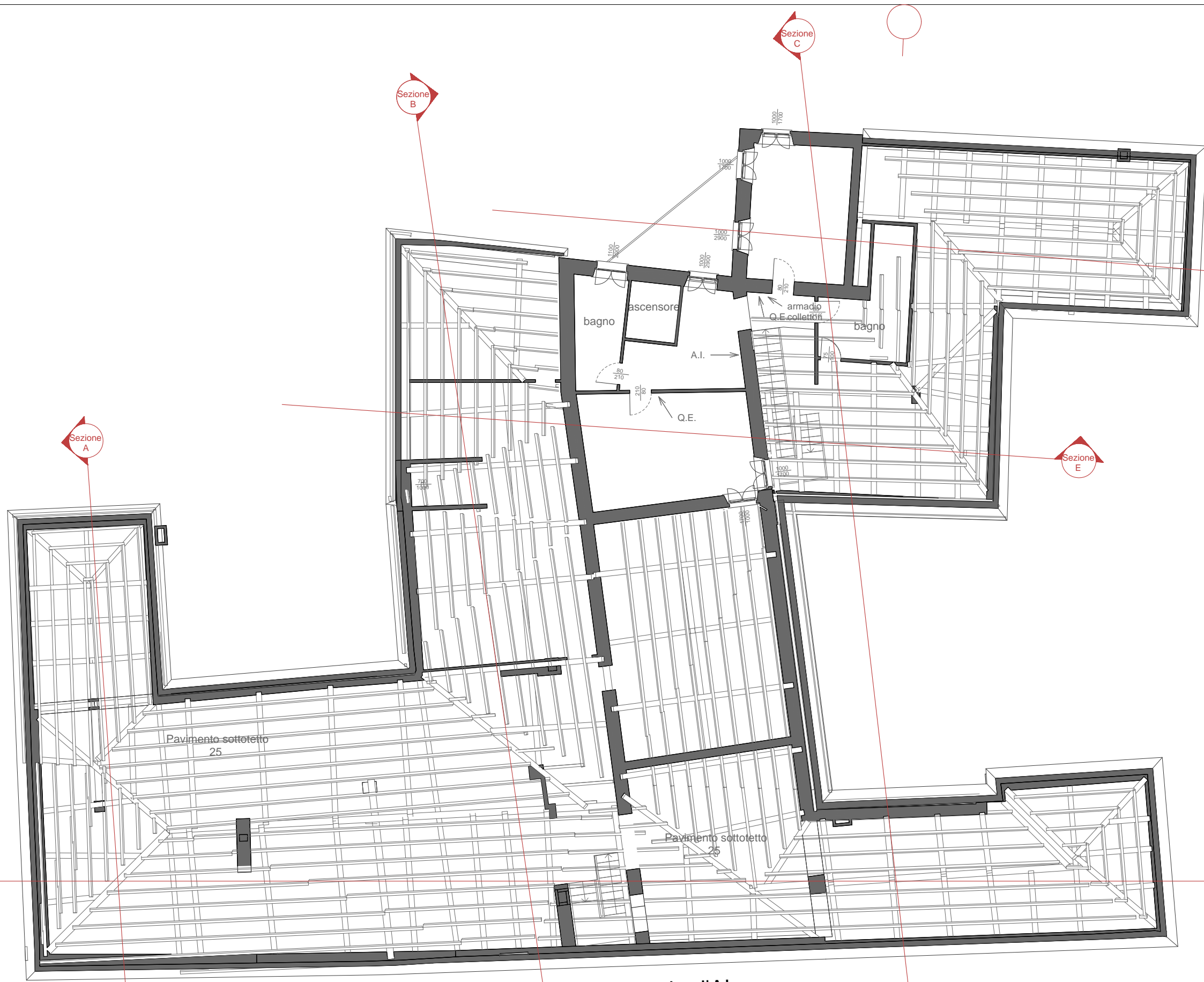
VILLA MATER

Edificio A. VILLA - Pianta piano primo
Scala 1:150



TAV.
4

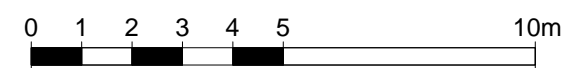
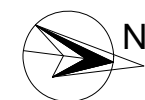
Via Rosta



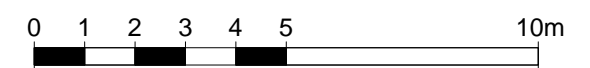
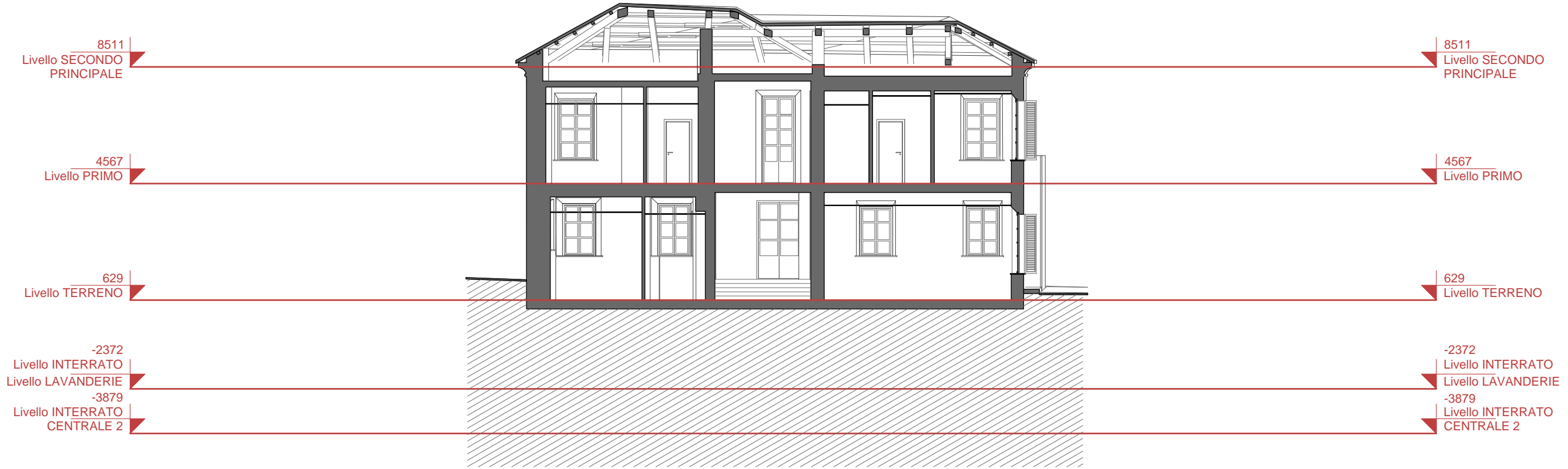
Vicolo d'Ala

VILLA MATER

Edificio A. VILLA - Pianta piano secondo
Scala 1:150



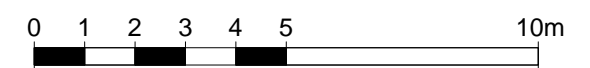
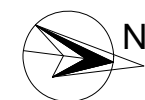
TAV.
5



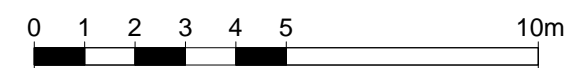
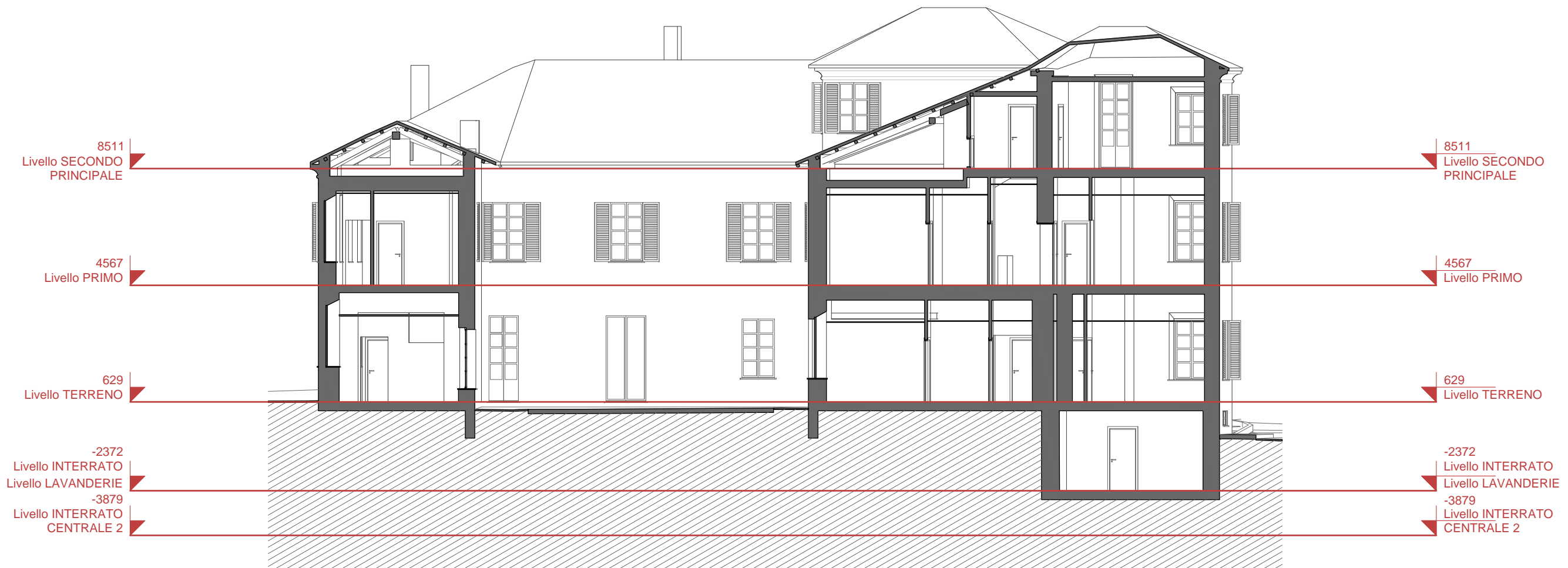


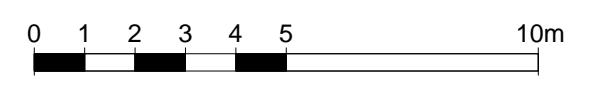
VILLA MATER

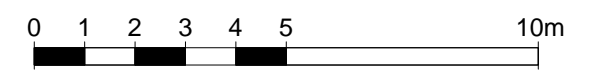
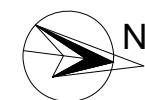
Edificio A. VILLA - Sezione B
Scala 1:150

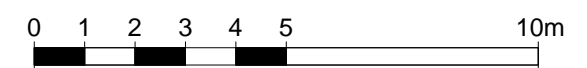
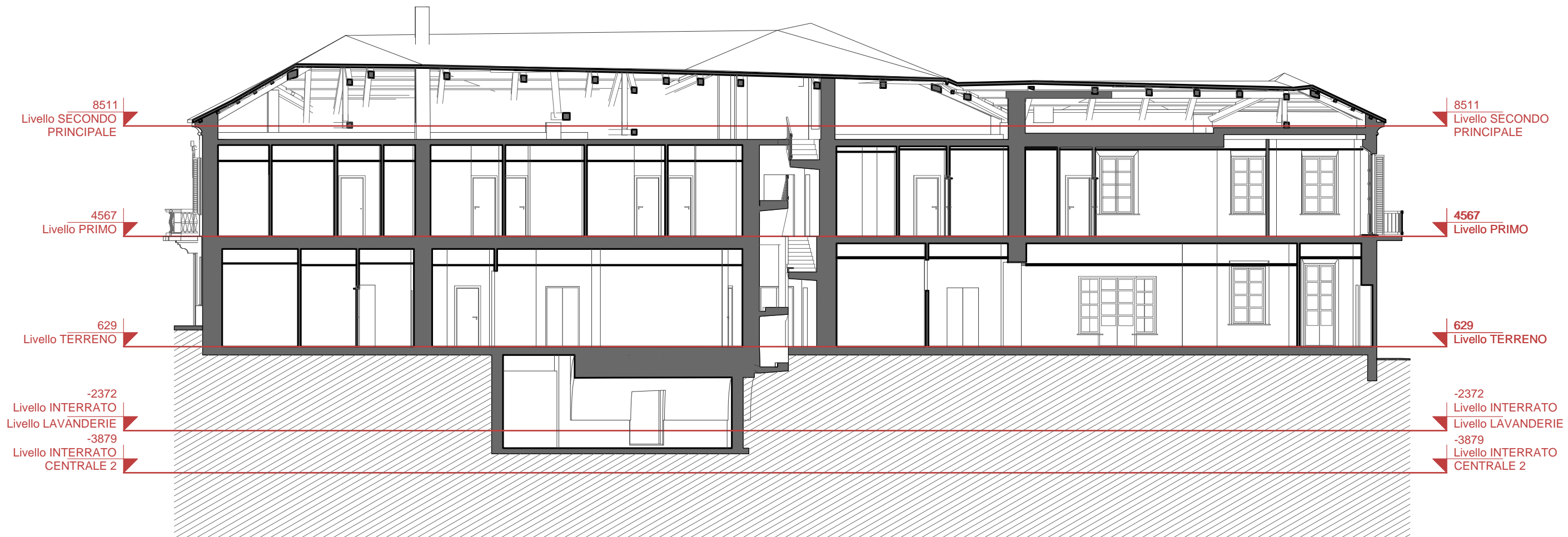


TAV.
7





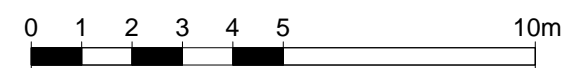
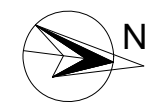






VILLA MATER

Edificio A. VILLA - Prospetto su via Rosta
Scala 1:150



TAV.
12



VILLA MATER

Edificio A. VILLA - Prospetto sul parco, lato corso Alcide de Gasperi
Scala 1:150

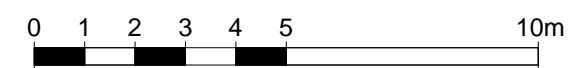


TAV.
13



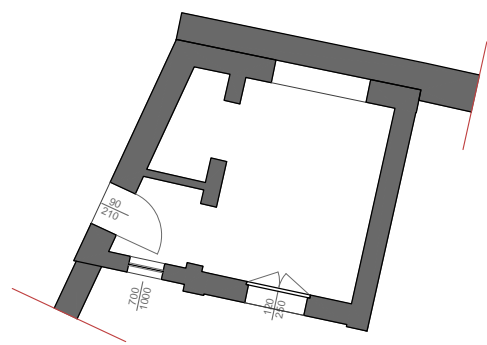
VILLA MATER

Edificio A. VILLA - Prospetto sul parco, lato Rustici B1 e B2
Scala 1:150

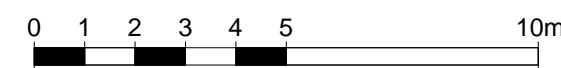
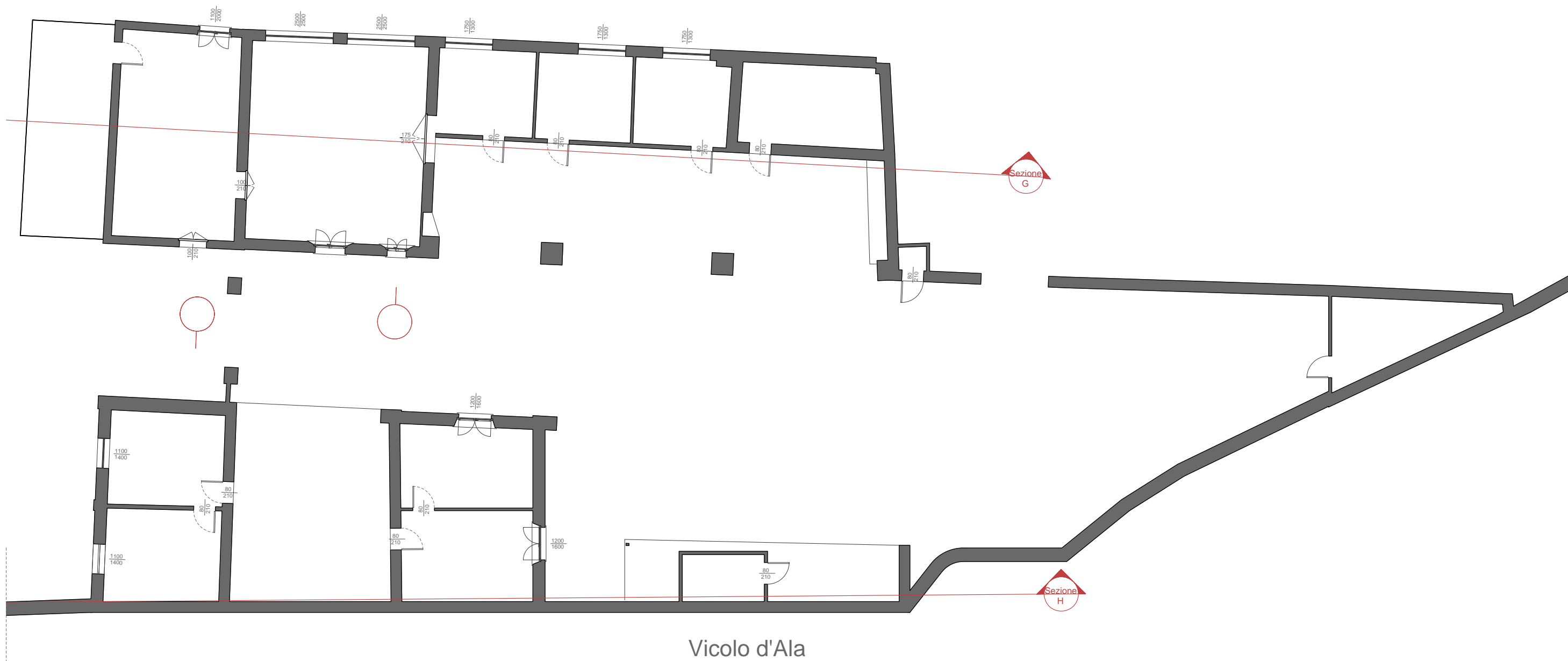


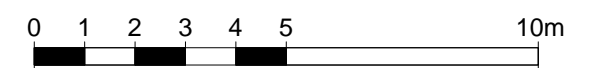
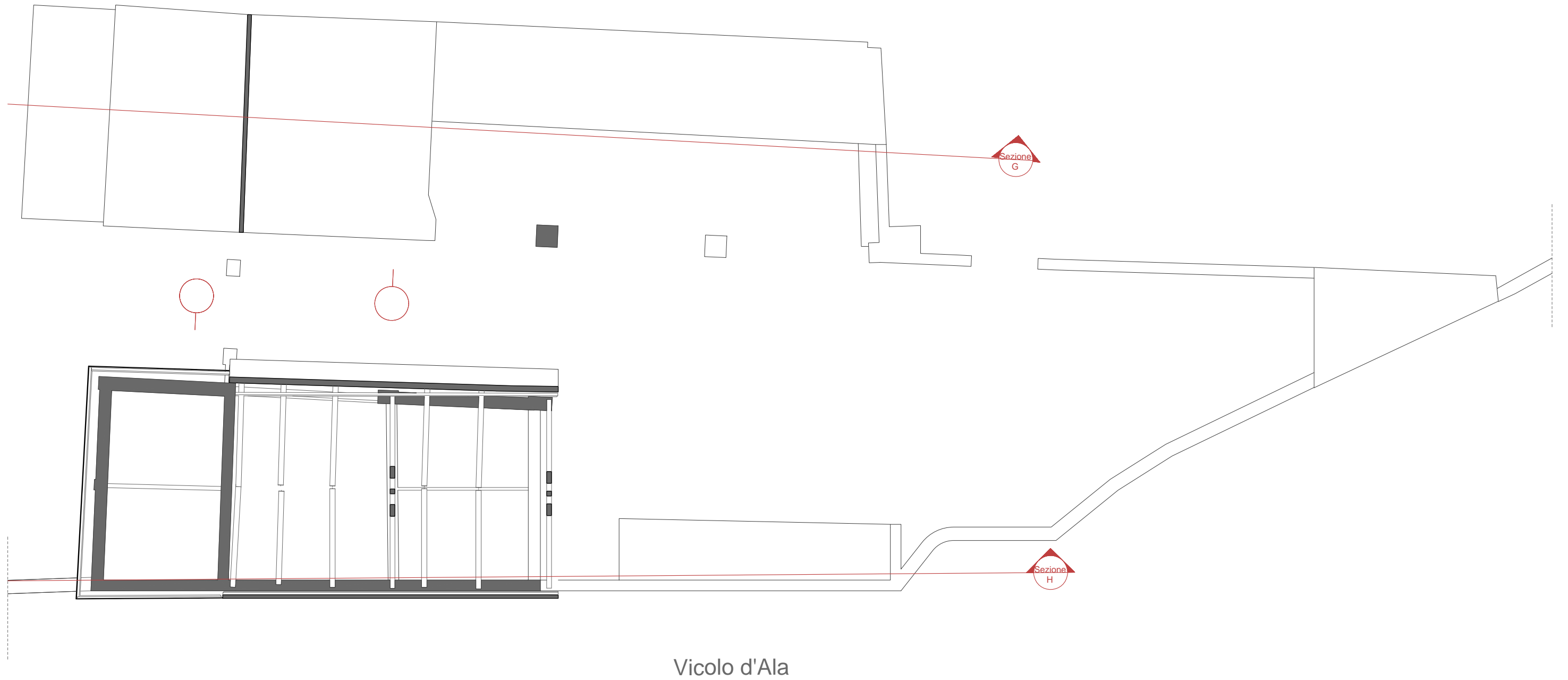
TAV.
14

Edificio C

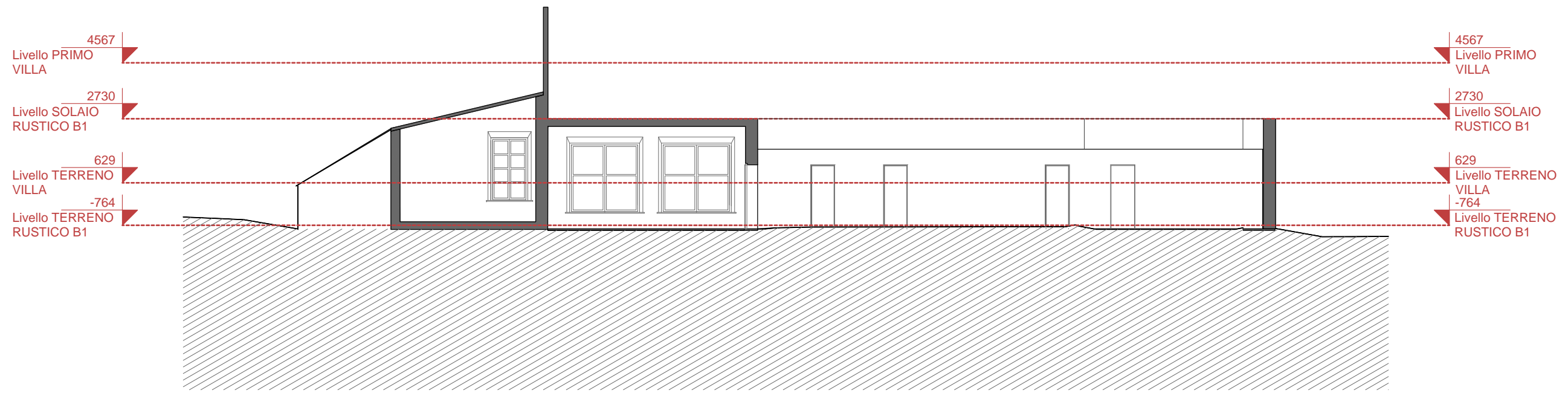


Edifici B





Edificio B1



Edificio B2

